

ALUFIRE®

INSTALLATION

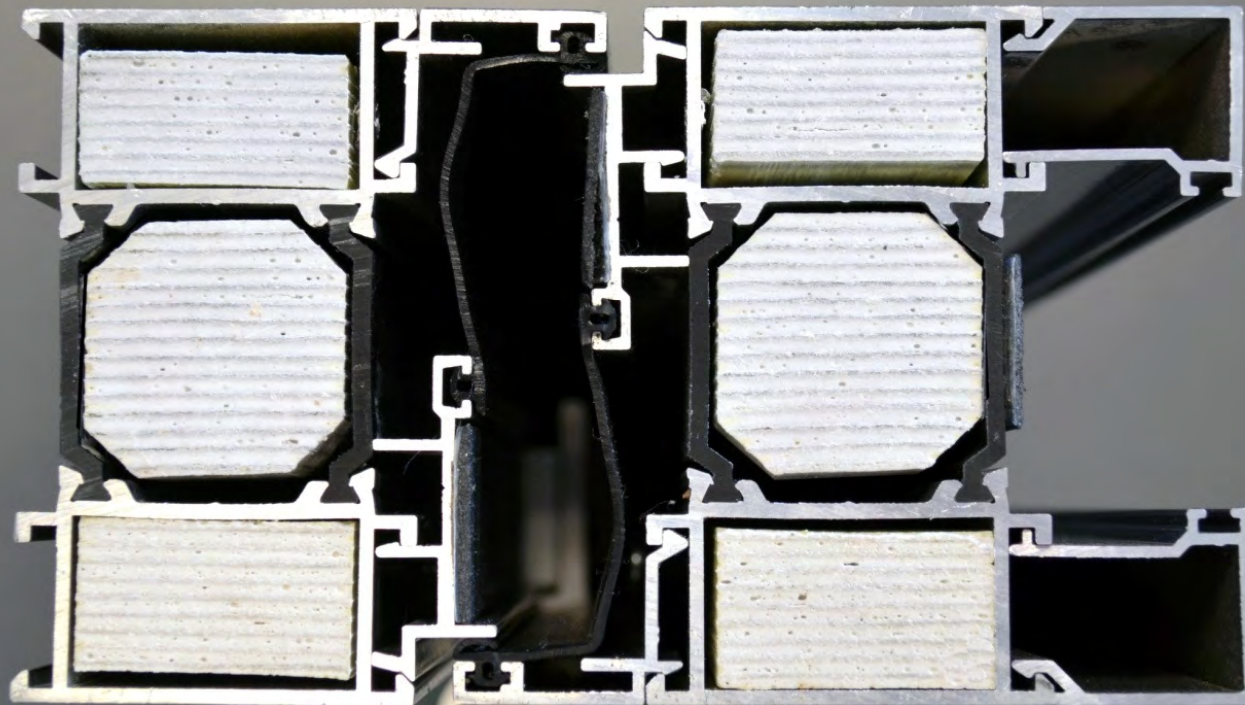
**BASIC INFORMATION ABOUT
ALUFIRE® PRODUCTS
INSTALLATION**

Ver. Classic 03/2016

ALUFIRE® PRODUCTS MATERIALS

- ALUMINIUM
- THERMAL BREAK
- PLASTER INSERTS
- EPDM GASKET
- GLASS
- ALUMINIUM PANEL
- ACCESSORIES

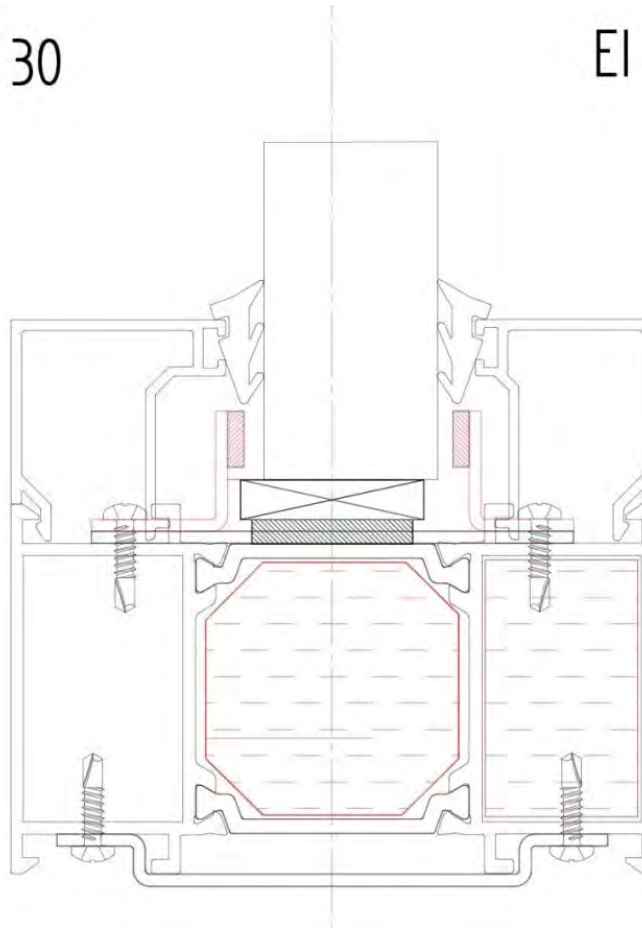
ALUFIRE® PRODUCTS MATERIALS



ALUFIRE® JOINERY MATERIALS

EI 30

EI 60



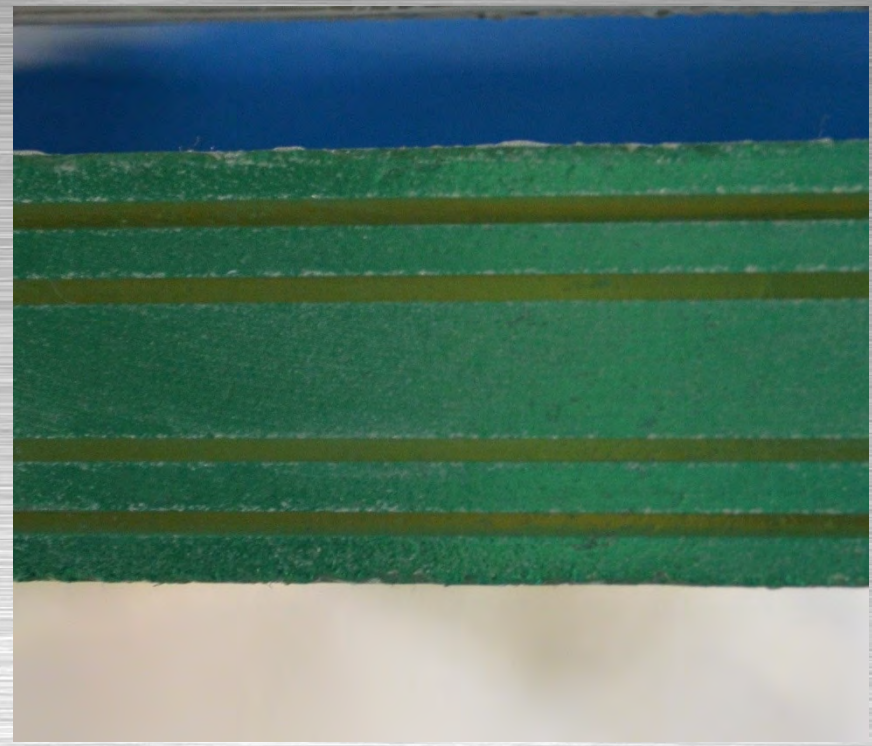
ALUFIRE® CONSTRUCTION OF PANEL



ALUFIRE® CONSTRUCTION OF GLASS



EI30



EI60

ALUFIRE® GLASS PROTECTION

CORK SPACERS
PCV STRIPES



ALUFIRE®

STANDARD PACKAGING FOR TRANSPORTATION



ALUFIRE®

PACKAGING FOR EXPORT AND TRANSPORTATION



ALUFIRE® GLASS PROTECTION

DELIVERED GLASS MUST BE PROTECTED AGAINST:

- MECHANICAL DAMAGE
- EFFECTS OF WEATHER CONDITIONS INCLUDING UV RAYS, RAIN AND SNOW
- MOISTURE
- HIGH AND LOW TEMPERATURES

ALUFIRE® INSTALLATION TEMPERATURE

GLASS MANUFACTURER	MINIMUM (°C)	MAXIMUM (°C)
AGC	-40	+40
PILKINGTON	-40	+50
SAINT-GOBAIN	-10	+45



GLASS TRANSPORT AND STORAGE ON-SITE

- PRODUCTS PACKED AND SECURED IN FACTORY IS TRANSPORTED BY THE MANUFACTURER TO THE SITE
- FROM THAT MOMENT, YOU TAKE RESPONSIBILITY FOR THE PRODUCT
- YOUR RESPONSIBILITIES INCLUDE CORRECT TRANSPORT AND PROTECTION OF THE PRODUCT ON-SITE
- SPECIAL ATTENTION SHOULD BE PAID TO THE GLASS



GLASS TRANSPORT AND STORAGE ON-SITE

WAYS TO STORE AND TRANSPORT GLASS ON-SITE



ALUFIRE®

GLASS TRANSPORT AND STORAGE ON-SITE





TOOLS

- HAMMER DRILL
- DRILL
- CORDLESS DRILL
- BUBBLE LEVEL
- MEASURE
- RUBBER HAMMER
- HAMMER
- WEDGES AND WOODEN PADS
- RIVER NUTS INSTALLER



ALUFIRE® PREPARING FOR INSTALLATION

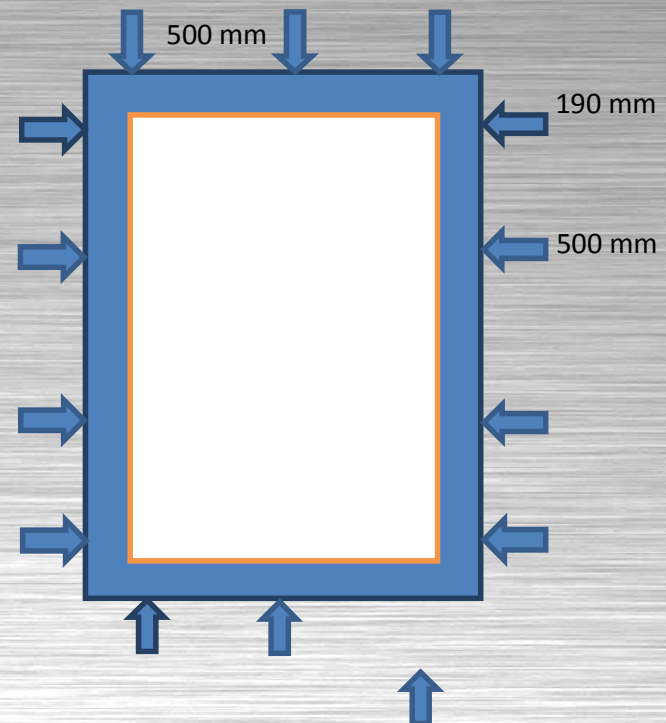
HOLE INSPECTION

- DIMENSIONS (CLEARANCE 10-30MM)
- HOLE DIAGONAL (MAX 10MM DIFFERENCE)
- FLOOR LEVEL

NOTE: INSTALLATION OF ALUFIRE PRODUCTS IS POSSIBLE ONLY BY MECHANICAL WAY

SCREW LOCATION:

- DISTANCE FROM CORNERS
MAX 190 MM
- DISTANCE BETWEEN SCREWS
MAX 500 MM

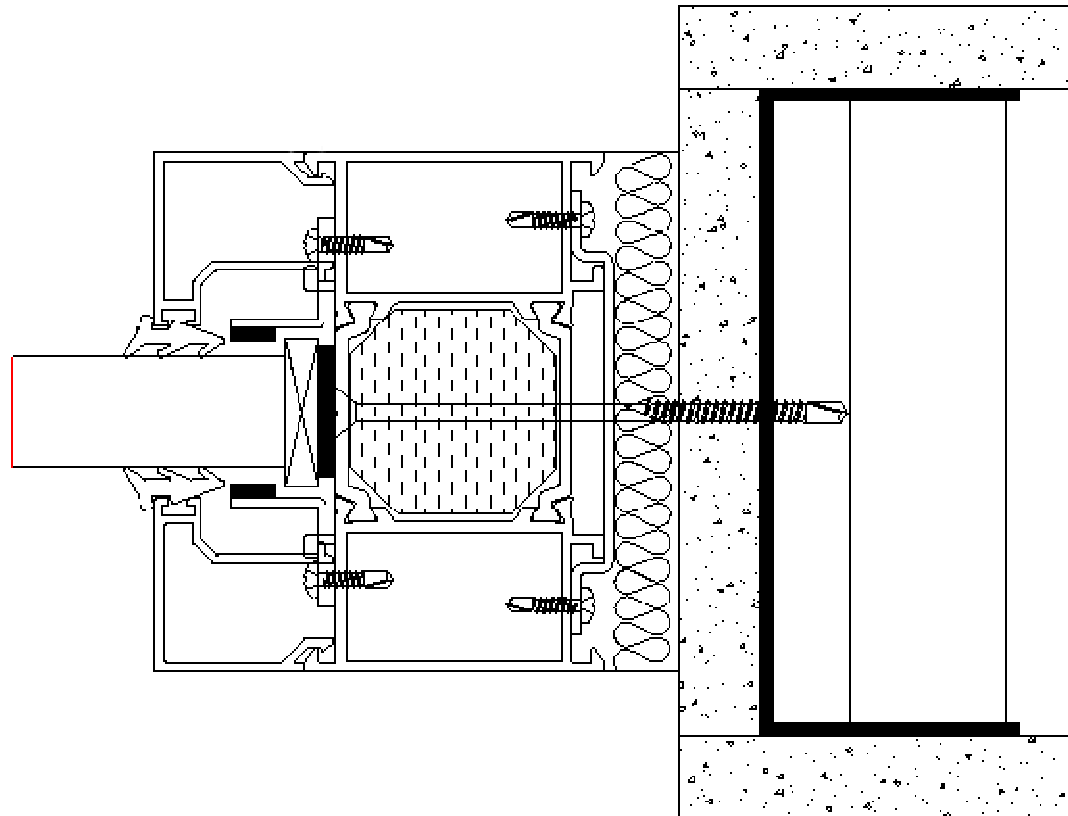


ALUFIRE®

OMEGA PLATE

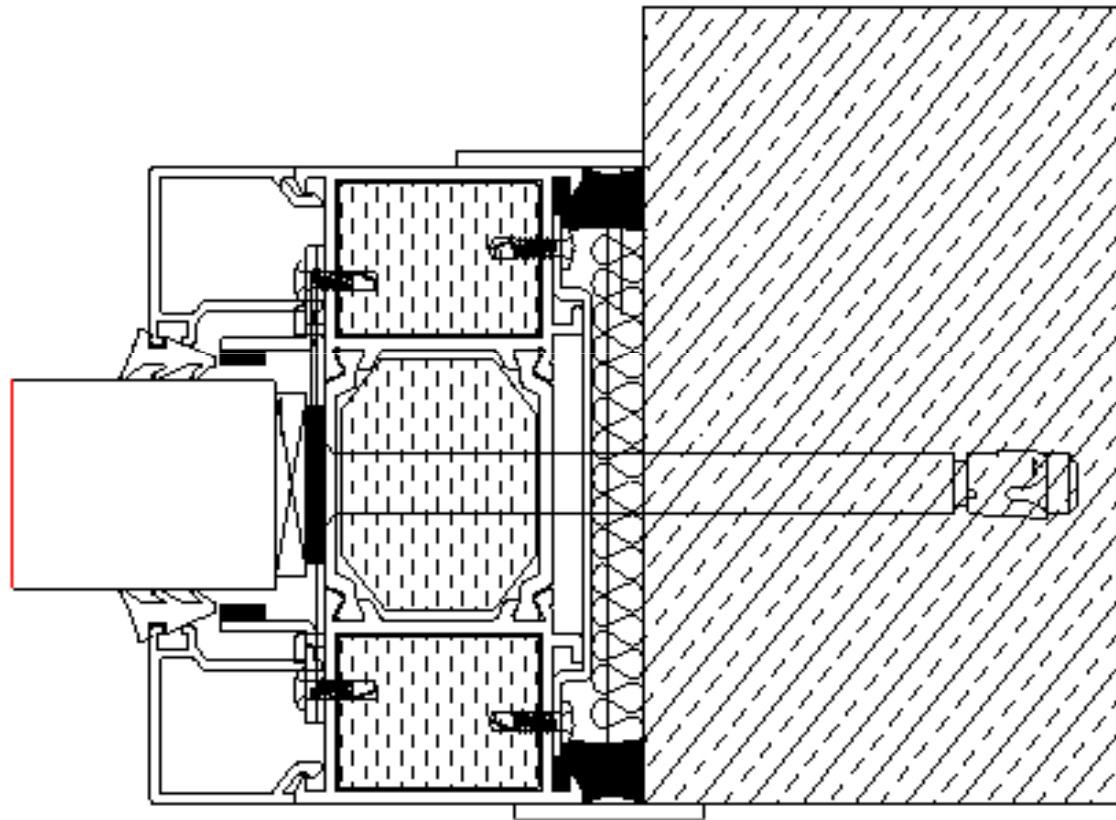


ALUFIRE® PLASTER BOARD WALL



ALUFIRE®

SOLID WALL



ALUFIRE® INSTALLATION MATERIALS

	ROCKWOOL (MIN.70 KG/M3)	SOUDAFOAM FR BY SOUDAL	GREAT STUFF BY DOW	BBS-9802 NBS BY DEN BRAVEN	NULLFIRE FF 197 1K-P BY ILLBRUCK
DOORS	X	X	X	X	NO
EI15, EI30 WALL	X	X	X	X	X
EI45, EI60 WALL	X	X	X	NO	NO
EI120 WALL	X	NO	NO	NO	NO

ALUFIRE® GLASS INSTALLATION

VARIOUS STEEL BRACKETS WITH FELT PADS
PROVIDED BY ALUFIRE SHOULD BE USED
FOR INSTALLATION OF GLASS IN THE FRAME



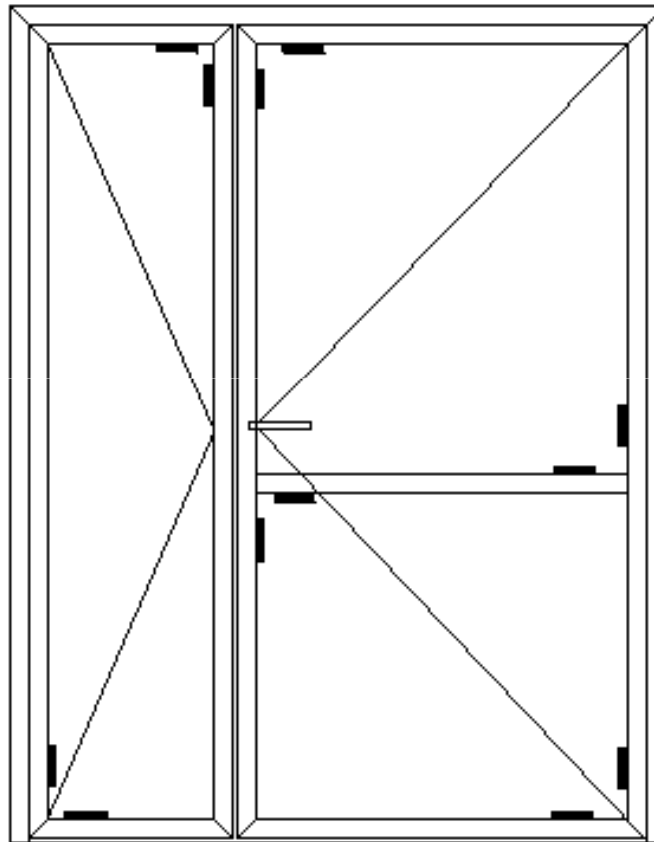
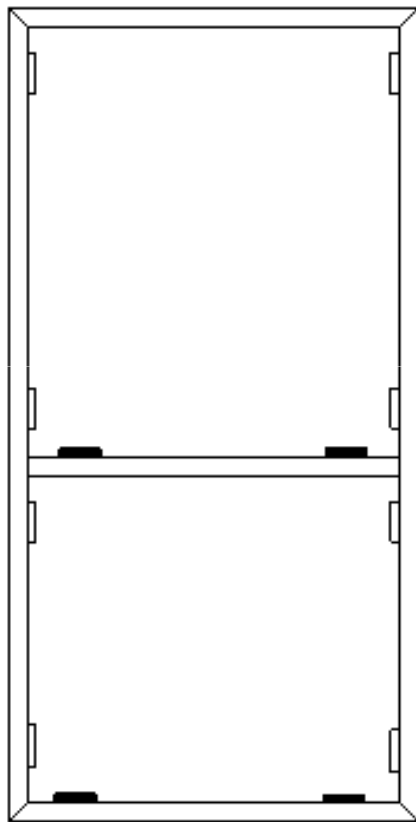


STEEL BRACKETS

INTERNAL USE				EXTERNAL USE	
GLASS	BRACKET	PANEL	BRACKET	GLASS	BRACKET
EI15	22			EI15	17
EI30	17	EI30	13	EI30	13
EI45	17			EI45	13
EI60	13	EI60	13	EI60	13 (48mm-10)
EI120	11	EI120	11	EI120	11

ALUFIRE®

WOODEN PADS



— Supportive pads

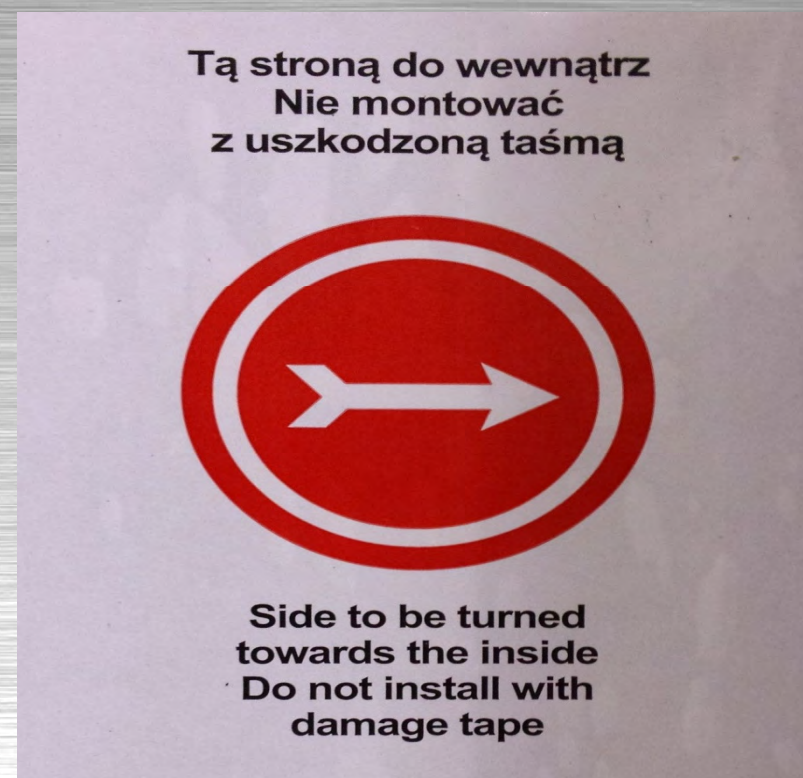
□ Protective pads

ALUFIRE[®] EXTERNAL GLASS INSTALLATION

PLEASE MAKE SURE TO INSTALL
THE FIREPROOF GLASS INSIDE
THE BUILDING.

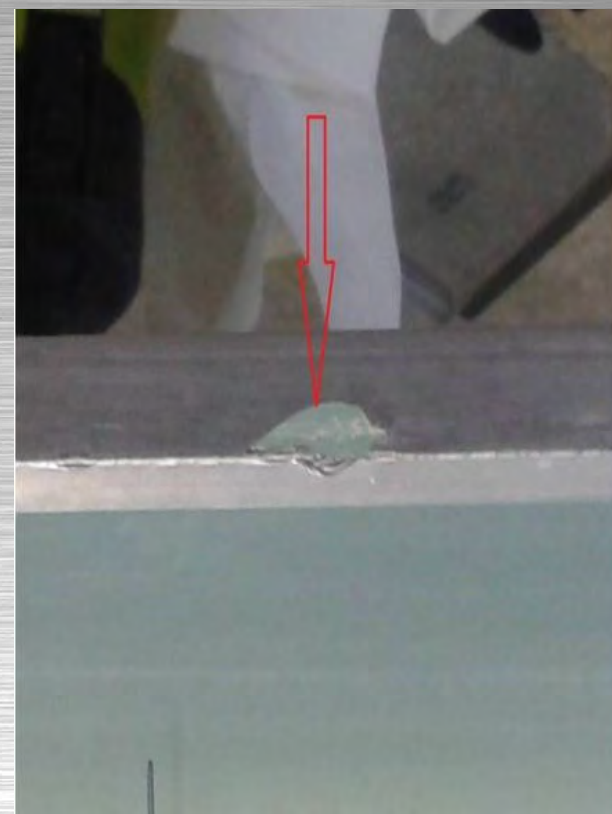
INSTALLING A FIREPROOF
GLASS ON OUTSIDE OF THE
BUILDING MAY DAMAGE THE
GLASS.

PLEASE INSTALL AS DESCRIBED
ON LABEL ON THE GLASS.



ALUFIRE® GLASS INSTALLATION

THE EDGES OF THE FIREPROOF GLASS ARE PROTECTED BY A SPECIAL PROTECTIVE TAPE. DAMAGING IT OR REMOVING THE PROTECTIVE TAPE CAN CAUSE PERMANENT DAMAGE TO THE GLASS!



ALUFIRE® GLASS INSTALLATION

SOME KINDS OF FIREPROOF GLASS
HAVE A PRECISE "UP / DOWN"
ORIENTATION. INCORRECT
INSTALLATION MAY DAMAGE
THE FIREPROOF GLASS.
DAMAGE ARE NOT SUBJECT TO
WARRANTY.



ALUFIRE® DOOR ACCESORIES

- HANDLE
- CYLINDER LOCK
- DOOR CLOSER
- CLOSING SEQUENCE CONTROLLER
- ELECTROMAGNETIC HOLDERS
- MAGNETIC DOOR LOCK

ALUFIRE®

CLOSERS



ALUFIRE® COMMON MISTAKES

THE CONSEQUENCES OF INSTALLATION ERRORS

- GLASS DAMAGE
- PROFILE DAMAGE
- NO STABILITY
- NO FIRE PROTECTION
- NO WARRANTY

ALUFIRE® INCORRECT INSTALLATION OF EXTERNAL GLASS



FIREPROOF GLASS ON OUTSIDE
(DAMAGE CAUSED BY UV)

ALUFIRE® INCORRECT INSTALLATION OF EXTERNAL GLASS



ALUFIRE® INCORRECT INSTALLATION OF EXTERNAL GLASS



ALUFIRE® INCORRECT INSTALLATION OF EXTERNAL GLASS



ALUFIRE® INCORRECT STORAGE



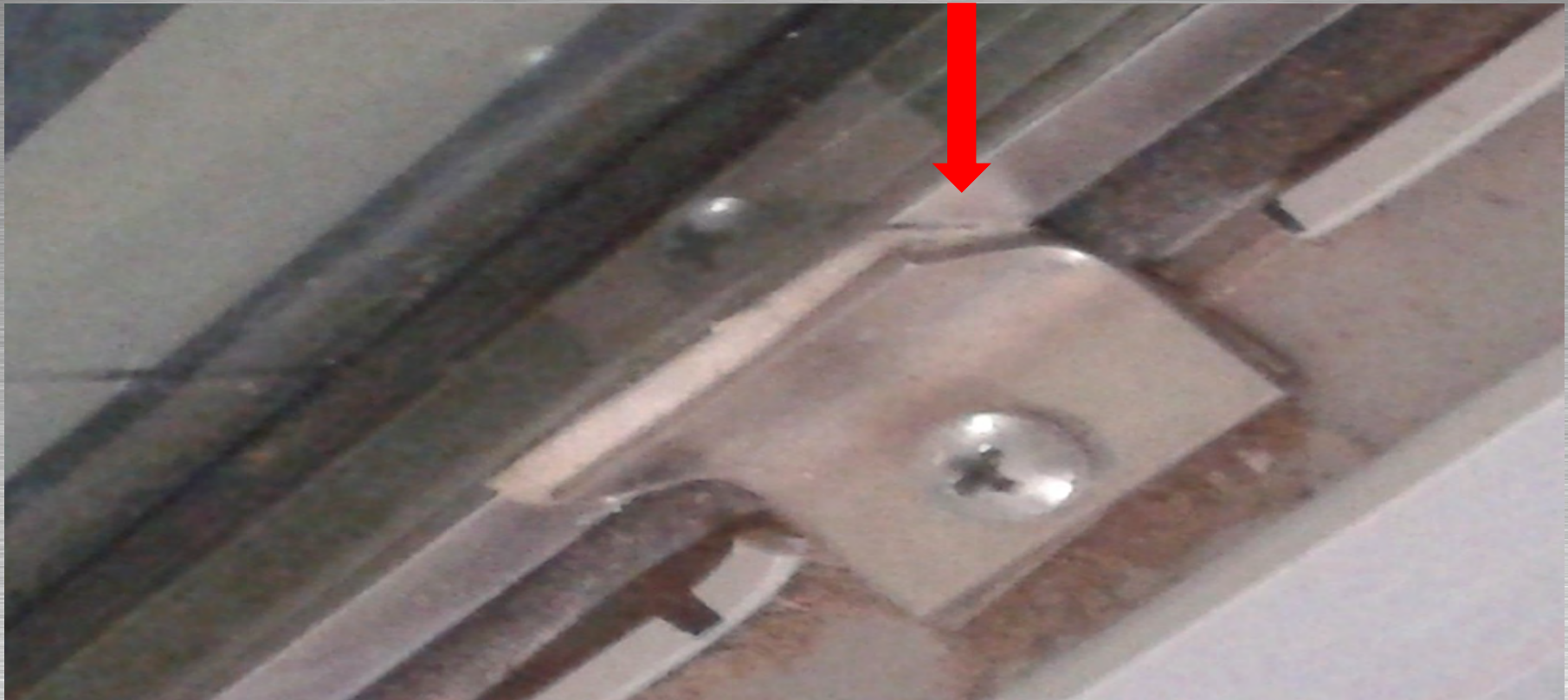
ALUFIRE® WRONG BRACKET SIZE



ALUFIRE® WRONG BRACKET SIZE



ALUFIRE® WRONG BRACKET SIZE



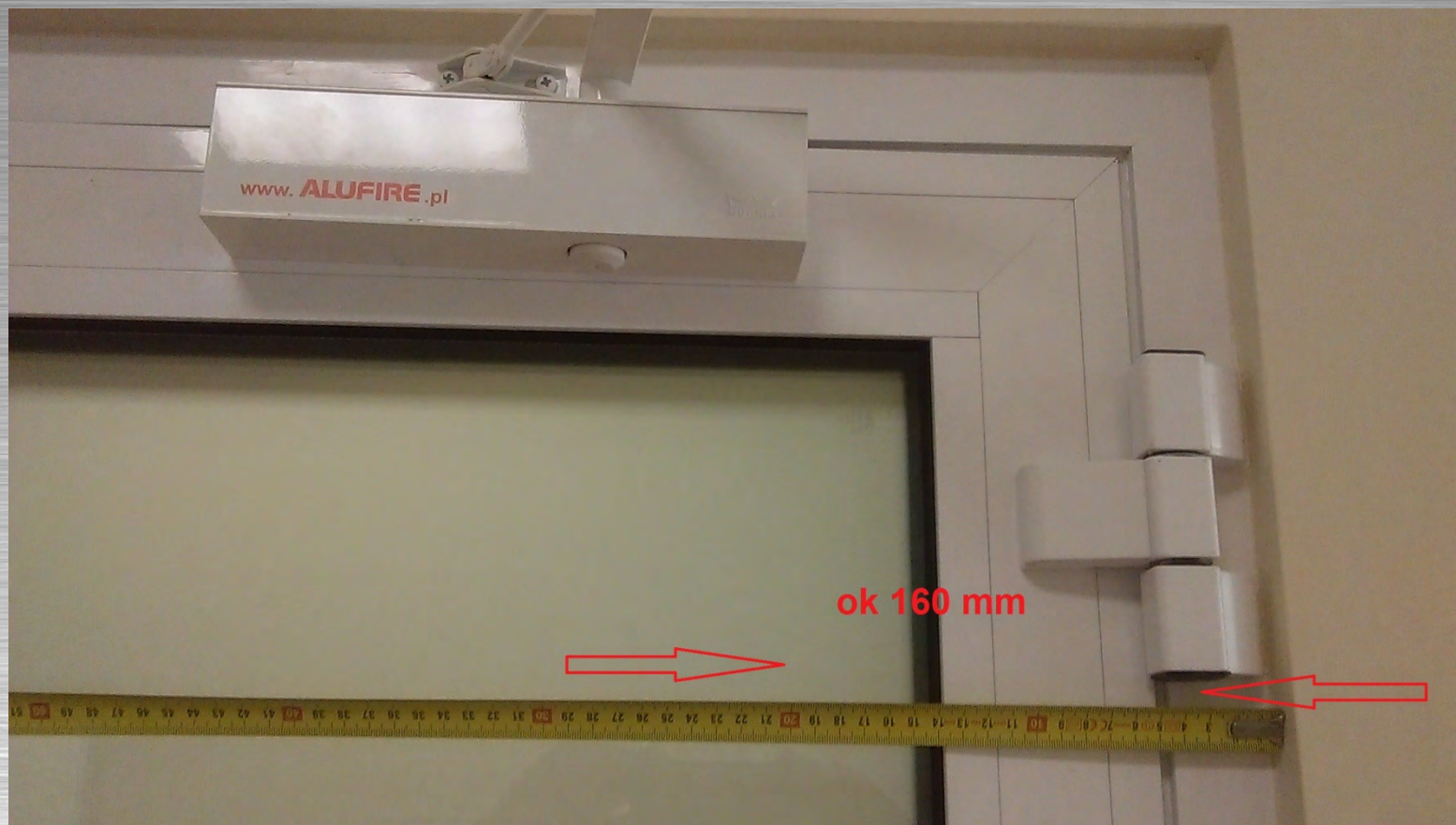
ALUFIRE®

INCORRECT SCREWS



ALUFIRE®

DRILLING TEMPLATE



ALUFIRE®

NO PRE-DRILLING



ALUFIRE®

GASKET TOO SHORT



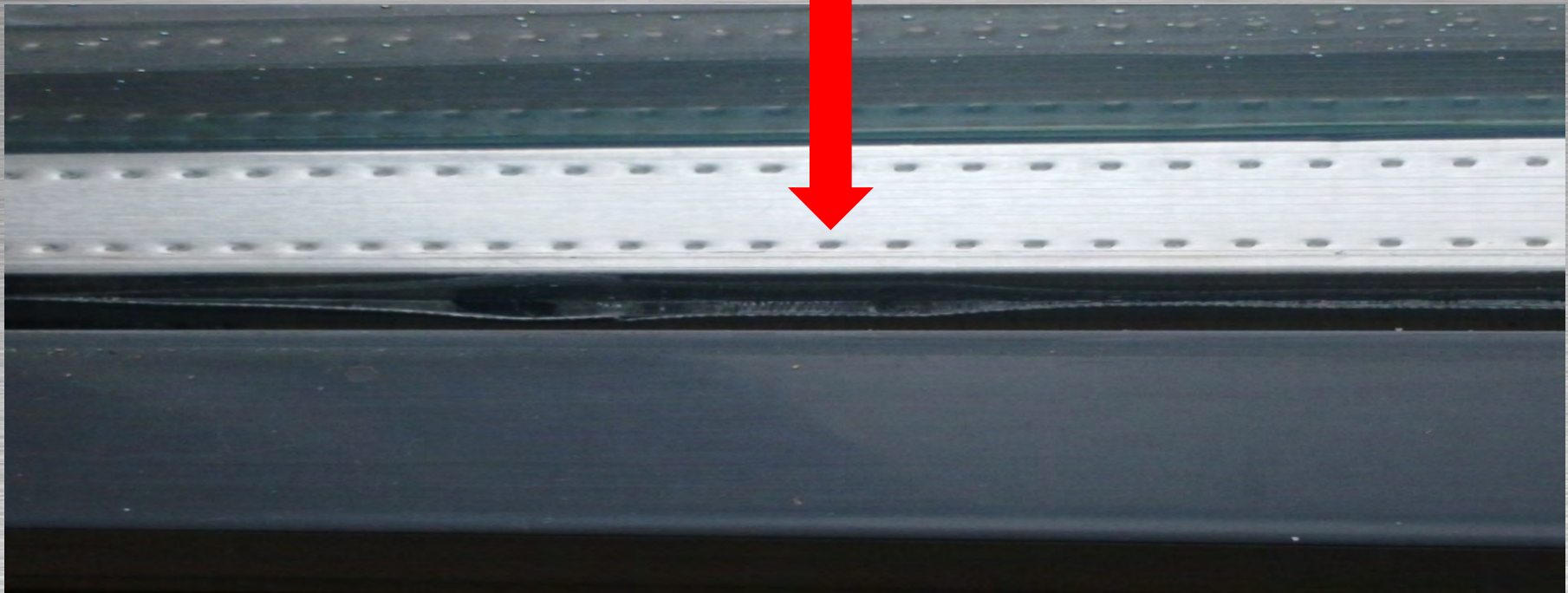
ALUFIRE®

INCORRECT PADS



ALUFIRE®

DAMAGED FILM



ALUFIRE®

DRILLING MISTAKES



ALUFIRE® THERMAL DAMAGE

MOST COMMON THERMAL DAMAGES ARE CAUSED BY:

- ANY SOURCES OF HIGH TEMPERATURE E.G
PORTABLE ELECTRIC FAN HEATERS
- HEATERS
- ELECTRIC KETTLES
- HALOGEN LIGHTS



ALUFIRE®

THERMAL DAMAGE



ALUFIRE®

WRONG HOLE PREPARATION



ALUFIRE®

INCORRECTLY INSTALLED DOOR BUMPER



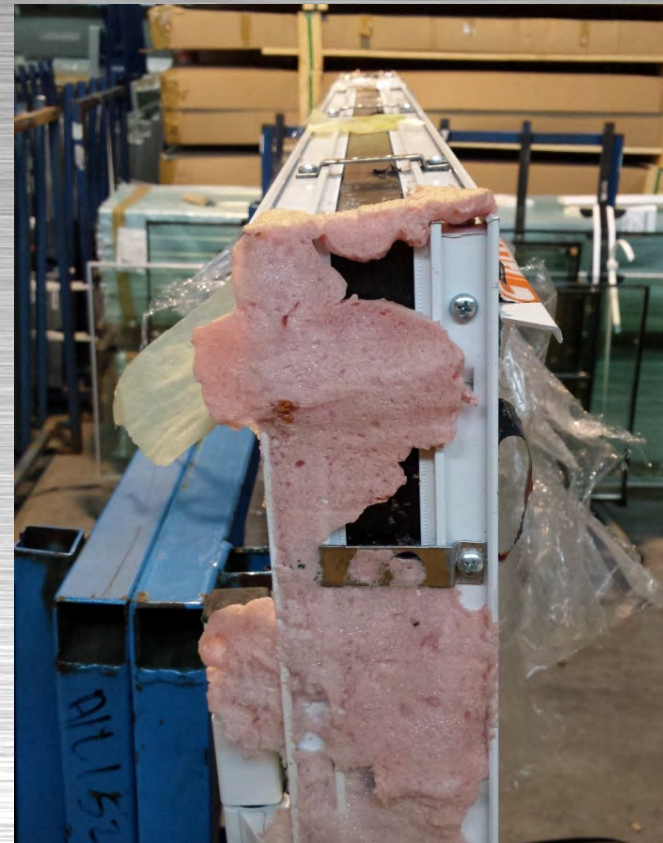
ALUFIRE®

DAMAGED FILM



ALUFIRE®

LACK OF FOAM



ALUFIRE®

LACK OF FOAM



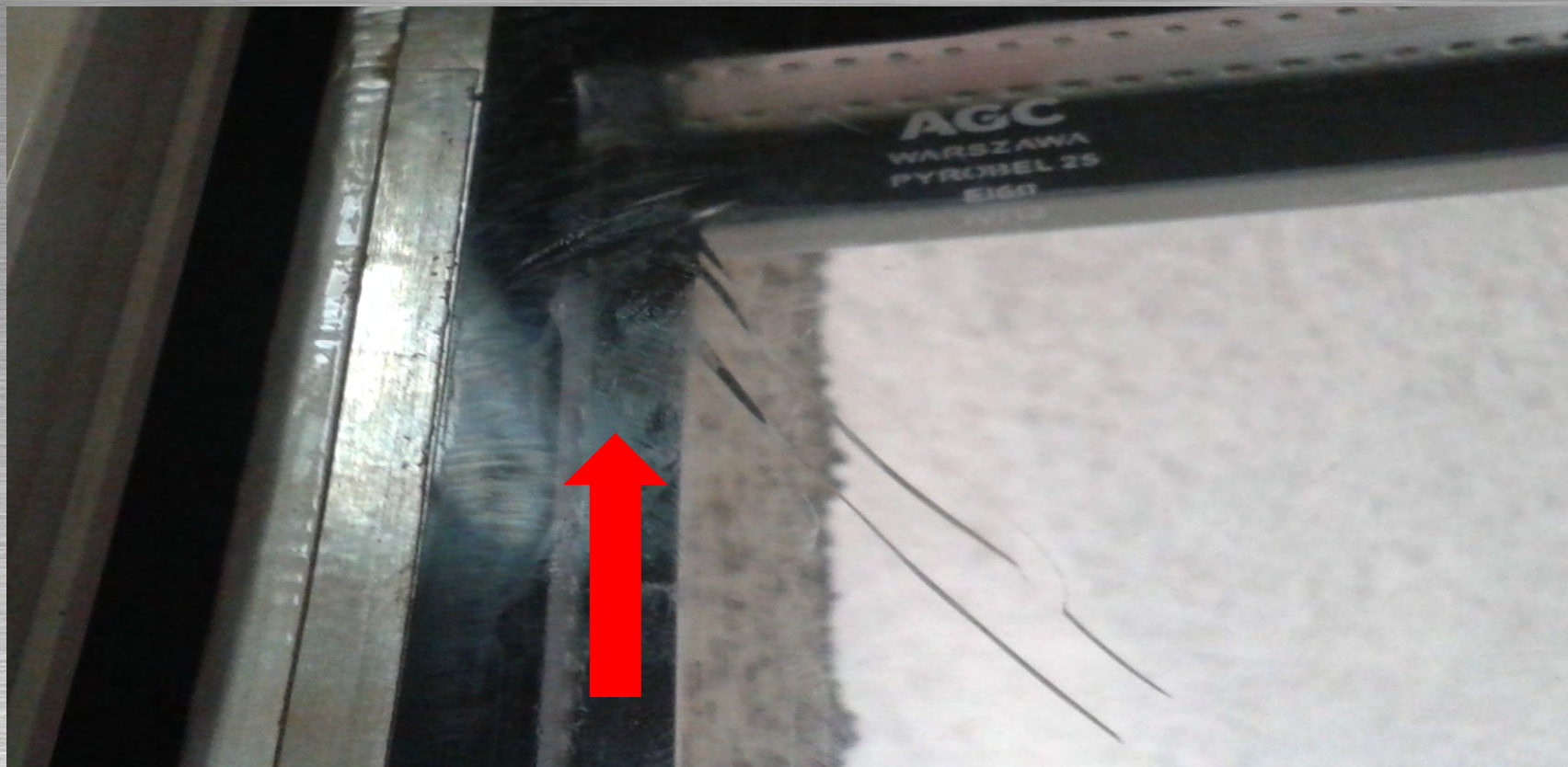
ALUFIRE®

DAMAGED CORNER



ALUFIRE®

DAMAGED GLASS



ALUFIRE®

????????????????????



ALUFIRE®

THANK YOU FOR YOUR
ATTENTION

