

PIVOT-DOOR (D2) AS PASSDOOR /END PANEL.
NON SLIDING, HINGED BETWEEN FLOOR /
OVERHEAD TRACK.
OPENS 90 DEGREES
CAN BE EQUIPPED WITH:
- ABLOY / ASSA LOCKS,
- HANDLES
- DOOR CLOSER

SLIDING PANEL (STD PANEL)
LOCKED WHEN FRONTAGE CLOSED

SLIDING PANEL (STD PANEL)
LOCKED WHEN FRONTAGE CLOSED

SLIDING PANEL (STD PANEL)
LOCKED WHEN FRONTAGE CLOSED

SLIDING PANEL (STD PANEL)
LOCKED WHEN FRONTAGE CLOSED

TECHNICAL DATA:

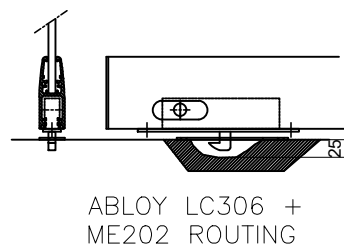
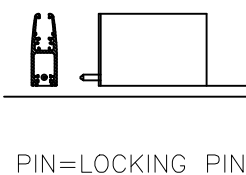
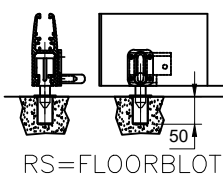
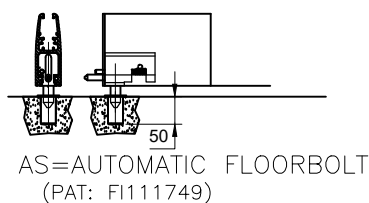
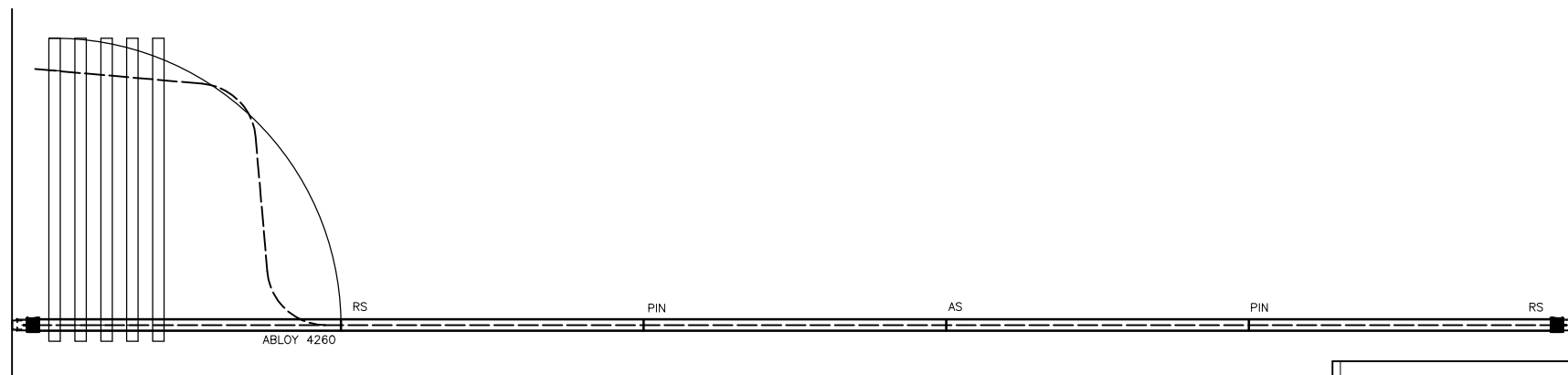
- OVERHEAD TRACK T-10-D / T-85
- NO FLOOR GUIDETRIM
- CARRIER: C-10-S
- AUTOMATIC FLOORBOLT LOCKING (PAT: FI111749)
- ABLOY / ASSA / iLOQ LOCKFRAMES AVAILABLE
- ALUMINUM PROFILE 100mm IN TOP- / BOTTOM
- GLASS OPTIONS: 55,2mm JA 66,2mm TEMPERED AND LAMINATED SAFETYGLASS.
- F- OR FEC TYPE WALL / D1 DOOR AND HINGE NOT TESTED BY VTT
- BULGRAR-RESISTANT GLASSES P4A AND P6B

NUMBERS:

- MAX PANEL HIGHT: 3200mm
- MAX WALL WIDHT: NO LIMITATION, 1 OFF STACKING AREA REQUIRED BETWEEN EVERY 10 METERS
- MAX PANEL WIDTH: 2100mm
- WEIGHT: 25-35 kg/m2, DEPENDING ON GLASS-TYPE

OTHER:

- PROFILES: SAA, POWDER COATED
- DOOR OPTIONS: D2
- TESTED BY: VTT TECHNICAL RESEARCH CENTRE OF FINLAND LTD, REPORT AVAILABLE UPON REQUEST



SCANMIKAEL

OSOITE WWW.SCANMIKAEL.COM
ADDRESS info@scanmikael.com
e-mail

Tehty piirustuksesta		Työnumero	
Drawn from Asiakas		Job.no.	
Client	Massa kg	Suhde	
DESIGNER	Weight kg		
DATE	9.6.2020	Scale	
TUOTE KOODI	L35-ACUSTO	ARKKI KOKO	Muutos
PRODUCT CODE		Paper Size	Rev.