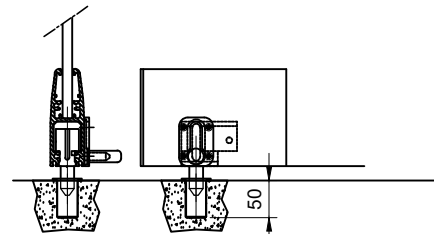
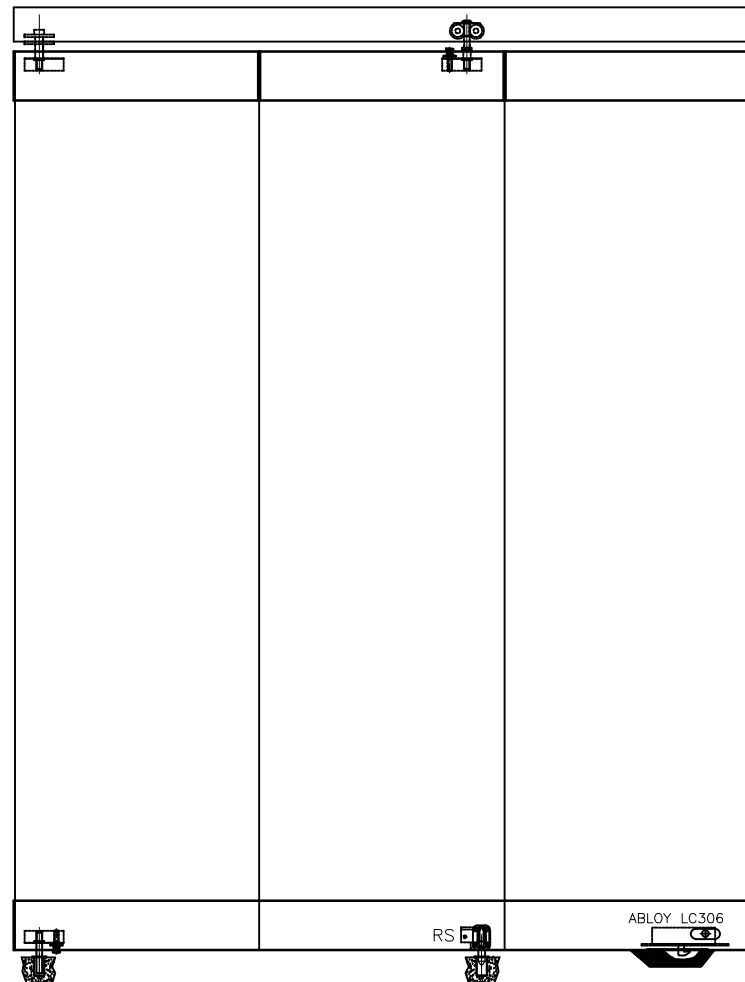
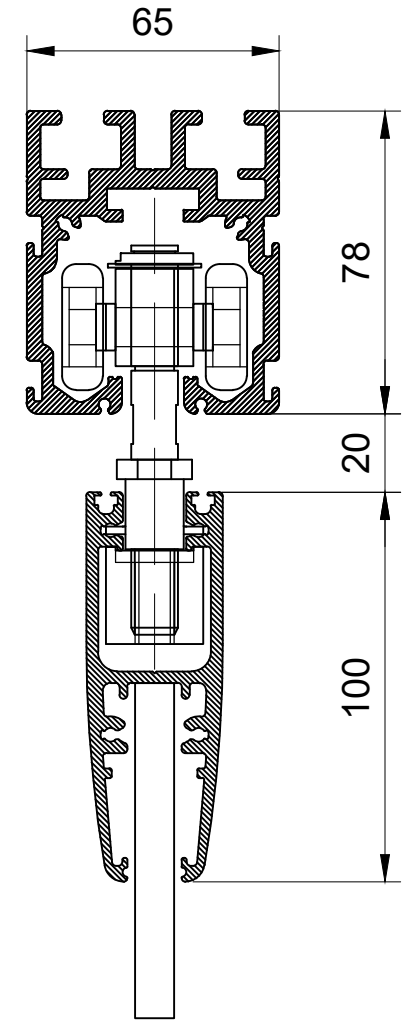


ABLOY LC306 +
ME202 ROUTING



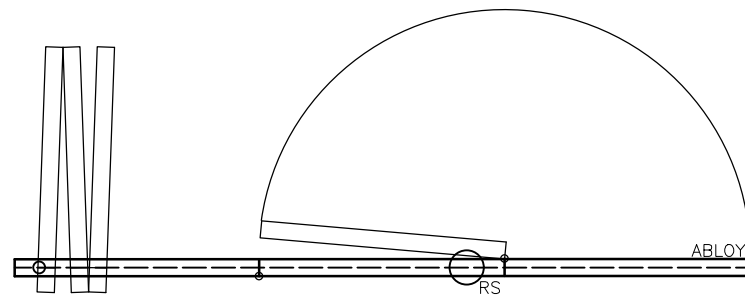
RS=FLOORBOLT



PANEL
NON-SLIDING, HINGED BETWEEN
FLOOR/OVERHEAD TRACK
LOCKED WHEN FRONTAGE CLOSED

SLIDING PANEL (STD PANEL)
LOCKED WHEN FRONTAGE CLOSED

PASSDOOR (D1).
SLIDING PANEL, HINGED INTO
PANEL NEXT TO IT
OPENS 90-170 DEGREES
CAN BE EQUIPPED WITH:
- ABLOY / ASSA LC306 / 4260
- HANDLES



TECHNICAL DATA:

- OVERHEAD TRACK T-10-D
- NO FLOOR GUIDETRIM
- CARRIER: C-10-D
- ABLOY / ASSA / iLOQ LOCKFRAMES AVAILABLE
- ALUMINUM PROFILE 100mm IN TOP- / BOTTOM
- GLASS OPTIONS: 10mm OR 12mm TEMPERED OR 55,2mm AND 66,2mm TEMPERED AND LAMINATED SAFETYGLASS.
- BURGLAR-RESISTANT GLASSES P4A AND P6B

NUMBERS:

- MAX PANEL HIGHT: 2500mm
- MAX WALL WIDHT: 4200mm
- MAX PANEL WIDTH: 700mm
- WEIGHT: 25-35 kg/m², DEPENDING ON GLASS-TYPE

OTHER:

- PROFILES: SAA, POWDER COATED, STAINLESS STEEL OR BRASS COVERING
- DOOR OPTIONS: D1
- ECCENTRIC HANGING
- PANELS HINGED TOGETHER
- RUBBER- / BRUSH SEALS IN BOTTOM AND VERTICAL AS AN OPTION

SCANMIKAEL

OSOITE WWW.SCANMIKAEL.COM

ADDRESS e-mail info@scanmikael.com

Tehty piirustuksesta		Työnumero	
Drawn from Asiakas		Job.no.	
Client	Massa kg	Suhde	
Weight kg	25-35kg/m ²	Scale	
DESIGNER	DATE	ARKKI KOKO	Muutos
TUOTE KOODI	13.2.2020	L35-FEC	Rev.
PRODUCT CODE	Paper Size		